

Mona's Delight (Duet)

Chords: G, D, G, D, G, D, G, C, G, D, G

System 1: Treble clef melody starts on G4, moving up stepwise. Bass clef accompaniment starts on G3, moving up stepwise.

System 2: Treble clef melody continues with eighth notes. Bass clef accompaniment continues with eighth notes.

System 3: Treble clef melody continues with eighth notes. Bass clef accompaniment continues with eighth notes.

System 4: Treble clef melody continues with eighth notes. Bass clef accompaniment continues with eighth notes.

System 5: Treble clef melody continues with eighth notes. Bass clef accompaniment continues with eighth notes.

System 6: Treble clef melody continues with eighth notes. Bass clef accompaniment continues with eighth notes.

System 7: Treble clef melody continues with eighth notes. Bass clef accompaniment continues with eighth notes.

System 8: Treble clef melody continues with eighth notes. Bass clef accompaniment continues with eighth notes.

Bear Dance

The musical score for "Bear Dance" is written in 2/4 time and consists of four staves. The key signature has one sharp (F#). The first staff begins with a repeat sign and contains four measures with chords Em, C, and D. The second staff contains seven measures with chords G, D, Em, Bm, C, D, and Em, ending with a double bar line. The third staff begins with a repeat sign and contains four measures with chords Em, D, C, and D. The fourth staff contains seven measures with chords G, D, Em, Bm, C, D, and Em, ending with a double bar line.

Em C D

G D Em Bm C D Em

Em D C D

G D Em Bm C D Em

Calliope House

Chords: D, F#m, Em, G

1. 2.

Chords: D, A, D, A, D

1. 2.

Chords: D, F#m, Em, G

1. 2.

Chords: D, A, D, A, D

Detailed description: The score for 'Calliope House' is written in 6/8 time with a key signature of one sharp (F#). It consists of four staves. The first staff begins with a treble clef, a key signature of one sharp, and a 6/8 time signature. It contains a whole rest followed by a quarter note D, then a repeat sign. The second staff continues with eighth notes and includes a first ending bracket over two measures. The third staff continues the melody with eighth notes and includes a second ending bracket over two measures. The fourth staff concludes the piece with a final measure and a double bar line.

Out on the Ocean

Chords: G, C, G, D

1. 2.

Chords: G, C, G, D, G

1. 2.

Chords: Em, D

1. 2.

Chords: G, C, G, D, G

Detailed description: The score for 'Out on the Ocean' is written in 6/8 time with a key signature of one sharp (F#). It consists of four staves. The first staff begins with a treble clef, a key signature of one sharp, and a 6/8 time signature. It contains a whole rest followed by a quarter note D, then a repeat sign. The second staff continues with eighth notes and includes a first ending bracket over two measures. The third staff continues the melody with eighth notes and includes a second ending bracket over two measures. The fourth staff concludes the piece with a final measure and a double bar line.

Chief O'Neill's Favourite

[A]

[B]

Pride of Petravore

[A]

[B]

Egan's Polka



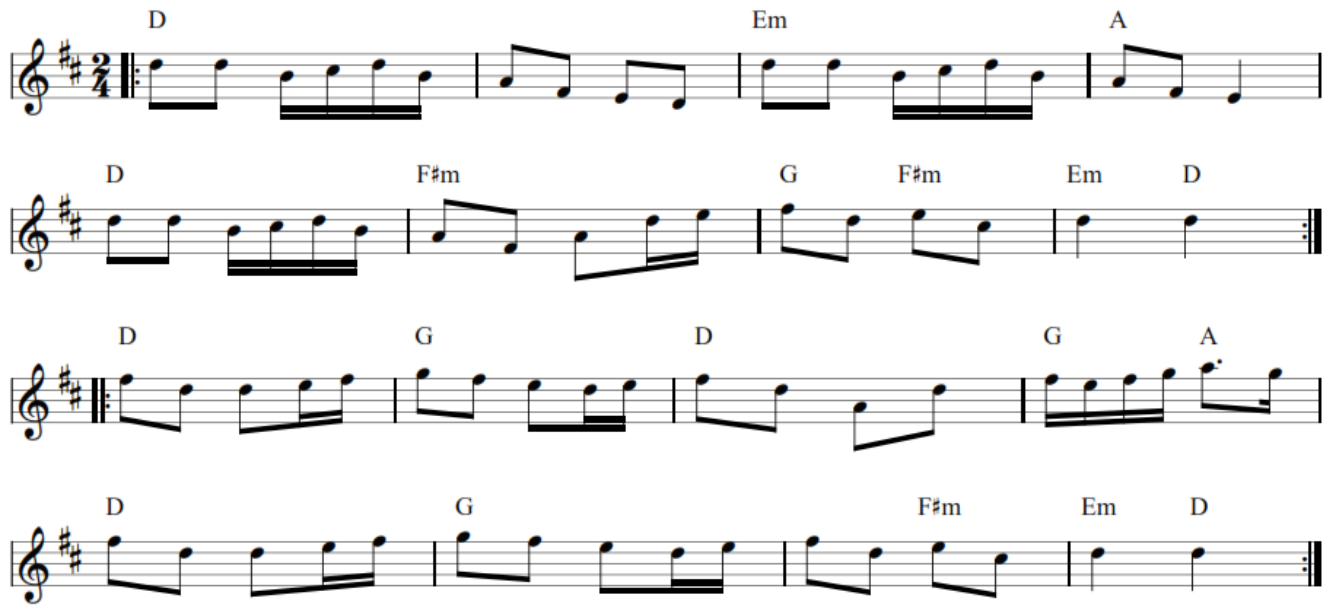
Four staves of music for Egan's Polka in D major, 2/4 time. The first staff contains the first four measures, with chords D, Em, and A. The second staff contains measures 5-8, with chords D, F#m, G, F#m, Em, and D. The third staff contains measures 9-12, with chords D, Em, and A. The fourth staff contains measures 13-16, with chords D, F#m, G, F#m, Em, and D. The piece ends with a double bar line and repeat dots.

Rakes of Mallow



Four staves of music for Rakes of Mallow in G major, 2/4 time. The first staff contains the first four measures, with chords G, Am, and D. The second staff contains measures 5-8, with chords G, C, Bm, Am, and G. The third staff contains measures 9-12, with chords G, Am, and D. The fourth staff contains measures 13-16, with chords G, C, Bm, Am, and G. The piece ends with a double bar line and repeat dots.

John Ryan's Polka



Note: These tunes are also available in guitar or mandolin tablature on request.
Please email Steve on treasurer@northwichfolk.co.uk